



# LOVERAMICS

At LOVERAMICS, we are striving to extend our innovative ideas on developing ceramic tableware. The name was inspired by a slogan of "I love ceramics" from our designer who loves ceramics. To us, good design comprises aesthetic craftsmanship with colors, practical usage on catering different cuisines as well as space saving for urban living. The first LOVERAMICS Concept Store opened since 2009. We run the store in multi-brands from world's top designers to offer you solutions for home.

The mother company, Lynns Concepts was founded in 1963. In this 48-year of history, she helped sketched the blueprint of international trading of today. Over the years, she has been developing products for millions, focusing on innovative ideas that keep pace with the trend of the world. LOVERAMICS is its latest brand addition of the already big family. As much as having a very unique identity, the tradition within the company is carried on.

## **China**

### **Hong Kong (Headquarter)**

Address: 7/F, Fortis Tower, 77 Gloucester Road, Wanchai, Hong Kong  
T: (852) 2115 9028 | F: (852) 2115 9038

### **Shenzhen**

Address: 17/F, YongHui Block, GuoQi Building, ShangBu South Road,  
Futian District, Shenzhen City, China  
T: 86 (755) 2238 5095 | F: 86 (755) 2238 5045

## **USA**

### **Los Angeles**

Address: 21007 Commerce Pointe Drive, City of Industry, CA 91789, USA  
T: (1) 909 595 7700 | F: (1) 909 595 3923

# LOVERAMICS

[www.loveramics.com](http://www.loveramics.com)

[info@loveramics.com](mailto:info@loveramics.com)

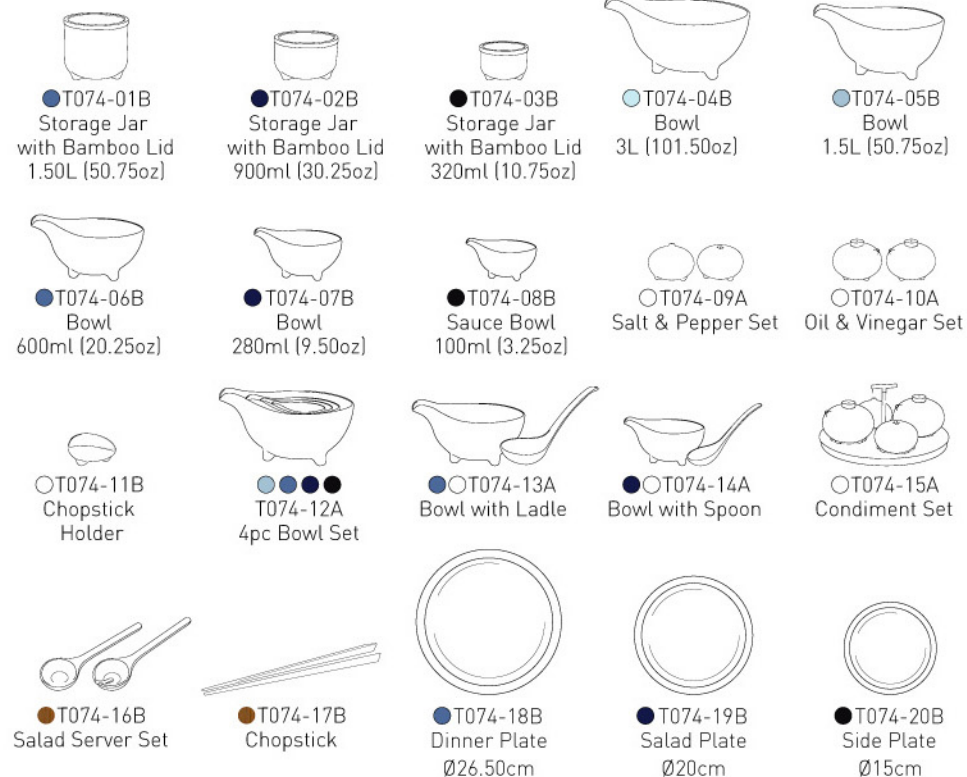


# Tripod

DESIGN PLUS

Designed by Simon Stevens

The Tripod concept is a functional, colorful porcelain collection where each piece stands on three feet for stability and functionality. The concept covers tableware, food storage and food preparation. All the bowls are versatile and can accommodate many international foods with each having a spout that also functions as a handle. The bowls and storage jars are conveniently stackable to help save space within the kitchen. Enhanced by a tonal cascade of various hues of blue from deep cobalt to a subtle azure, Tripod won the Design Plus Award 2011 and has been selected as the permanent collections of the Frankfurt Museum of Applied Art.



LOVERAMICS

[www.loveramics.com](http://www.loveramics.com)

[info@loveramics.com](mailto:info@loveramics.com)

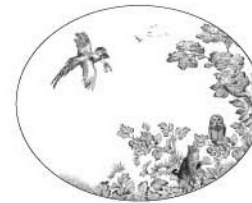




# A Curious Toile

Designed by Tracy Hollins

When nobody is looking, are you curious about what animals do in wildwood? A Curious Toile is not only a dinnerware set, but also a storyteller. The designer draws on historic ceramic printing techniques in a familiar quintessential English scene with a playful and unexpected twist. Each piece within the range tells its own story, the observer wanders across the landscape to discover the story within.



D072-01B  
Oval Platter  
30 x 24cm



D072-02B  
Dinner Plate  
Ø27cm



D072-03B  
Salad Plate  
Ø21cm



D072-04B  
Side Plate  
Ø15cm



D072-05B  
Serving Bowl  
Ø23cm



D072-06B  
Soup Bowl  
Ø20cm



D072-07B  
Bowl  
Ø12.50 x H7.50cm



D072-08B  
Bowl  
Ø10.50 x H6.50cm



D072-09B  
Soya Dish  
Ø8cm



D072-10B  
Mug  
350ml (11.75oz)

**LOVERAMICS**

[www.loveramics.com](http://www.loveramics.com)

[info@loveramics.com](mailto:info@loveramics.com)



# Er-go!

Designed by Simon Stevens

East meets west with the Er-go! dinnerware set, giving free rein for you to cater either eastern or western cuisine. Each item within the range multi-functionally interacts with others. The glazed and unglazed finishing not only projects the beauty of color contrast, but also ergonomically offers a secure grip. Space-saving with all small bowls could be stored in large bowl providing ideal solutions for small Asian kitchens.

					
○ D068-01B Teapot 1.3L [44oz]	● D068-02B Teapot 600ml [20.25oz]	● D068-03B Dinner Plate Ø26.50cm	● D068-04B Salad Plate Ø20cm	● D068-05B Bread Plate Ø15cm	● D068-06B Soya Dish Ø8.50cm
					
● D068-07B Pasta Bowl Ø26cm	● D068-08B Soup Plate Ø20cm	● D068-09B Mixing Bowl 4L [135.25oz]	● D068-10B Mixing Bowl 1.75L [59oz]	● D068-11B Cereal Bowl Ø14cm	● D068-12B Rice Bowl Ø11.50cm
					
● D068-13B Oriental Tea Cup 200ml [6.75oz]	● D068-14B Cup and Saucer 310ml [10.50oz]	● D068-15B Mug 290ml [9.75oz]	○ D068-16B Creamer 420ml [14oz]	○ D068-17B Spoon 18cm	○ D068-18B Chopstick Rest 4.50cm

**LOVERAMICS**

[www.loveramics.com](http://www.loveramics.com)

[info@loveramics.com](mailto:info@loveramics.com)



# Miix

**MoMA**selection

Designed by Lee Chi Wing

A hybrid of traditional and futuristic, Miix tea set is crafted with simple body features a classic handle to serve you an elegant tea time everyday. The glazed and unglazed finishing on high quality fine bone china delivers the art of color contrast.



● C063-01ABL  
● C063-02AGR  
● C063-03ABR  
● C063-04API  
○ C063-05AWH  
Mug  
350ml (11.75oz)



● C063-06ABL  
● C063-07AGR  
● C063-08ABR  
● C063-09API  
○ C063-10AWH  
Coffee Cup & Saucer  
220ml (7.25oz)



● C063-11ABL  
● C063-12AGR  
● C063-13ABR  
● C063-14API  
○ C063-15AWH  
Espresso Cup & Saucer  
120ml (4oz)



● ● ● ● ●  
C063-16A  
5pc Spoon Set

● C063-17ABL  
● C063-18AGR  
● C063-19ABR  
● C063-20API  
○ C063-21AWH  
2pc Spoon Set  
12cm



● C063-22ABL  
● C063-23AGR  
● C063-24ABR  
● C063-25API  
○ C063-26AWH  
Teapot  
800ml (27oz)



● C063-27ABL  
● C063-28AGR  
● C063-29ABR  
● C063-30API  
○ C063-31AWH  
Salad Plate  
Ø21cm

# LOVERAMICS

**LOVERAMICS**

[www.loveramics.com](http://www.loveramics.com)

[info@loveramics.com](mailto:info@loveramics.com)



# LOVERAMICS

## Range

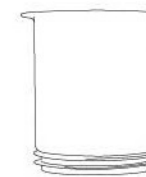


Designed by What's That

Getting bored with your glass or plastic canister? Range is a set of canisters made of porcelain offering colorful choices for your kitchen. The anti-slip and removable silicone ring covers the foot and connects each item together allowing you flexible usage. They are stackable, saving a lot of space. Stacked mugs to the teapot top with the clever tea set, you can carry it all in one hand.



● T070-01BOR  
Teapot  
750ml (25.25oz)



● T070-02BGR  
Storage Jar  
750ml (25.25oz)



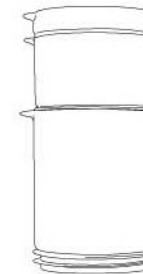
● T070-03BPU  
Storage Jar  
350ml (11.75oz)



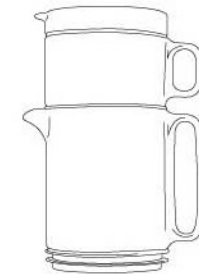
● T070-04BBL  
Mug  
350ml (11.75oz)



● T070-05BRE  
● T070-06BYE  
Lid / Dish  
10.50 x H3.30cm



● ● ●  
T070-91A  
3pc Canister Set  
750ml (25.25oz) Storage Jar  
350ml (11.75oz) Storage Jar  
Lid / Dish



● ● ●  
T070-92A  
3pc Tea Set  
750ml (25.25oz) Teapot  
350ml (11.75oz) Mug  
Lid / Dish

## LOVERAMICS

[www.loveramics.com](http://www.loveramics.com)

[info@loveramics.com](mailto:info@loveramics.com)